



Installation

Contents

Installing WordMaker

Installation	2
Macintosh	2
Windows.....	4
What is Installed	7

Installing WordMaker

Before you can use this program, you must run the Installer. The Installer places the application on your hard drive. Then, to use the program, launch the application from your hard drive with your CD in the CD-ROM drive.

System Recommendations

Mac OS

- G3/iMac 233 MHz or faster
- System 8.6 - 9.x
- 128 MB RAM minimum
- 70 MB hard drive space minimum
- Monitor capable of thousands of colors at 800 x 600
- CD-ROM drive (8X minimum, 24X recommended)
- Headphones recommended

Windows

- Pentium II 233 MHz PC or faster
- Windows 98SE, ME, 2000, XP
- 128 MB RAM minimum
- 70 MB hard drive space minimum
- Monitor capable of 16-bit color at 800 x 600 display
- CD-ROM drive (8X minimum, 24X recommended)
- SoundBlaster® true compatible sound card
- Headphones recommended

Before You Install

- Turn off any virus protection programs.

Installation

Mac OS

1. Insert the WordMaker CD in CD-ROM drive.
2. Double-click the WordMaker CD icon.
3. Double-click the WordMaker Installer icon.



The WordMaker Installer screen appears.



4. Click **Continue** to go on with the installation.

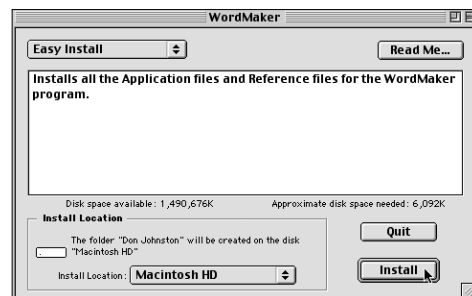
The License Agreement screen appears. It is a standard Software License Agreement.

5. To **continue** with the installation, click **Accept**. Otherwise, click **Decline** to quit the Installer.

The Read Me screen is next. Read through the information in the Read Me for information on system requirements, known problems and version notes.

6. Click **Continue**.

The Install screen is next.



Note: The **Easy Install** option is desired for most computers and situations.

Note: WordMaker files will install on your startup drive unless you select a different install location. To install it on a different volume, use the Install Location buttons (Select Folder and Switch Disk) on the Install screen to select an alternate destination.

7. Click **Install**.

8. Follow the prompts on the screen to complete the installation.

Note: You will be asked if you want to install an alias for WordMaker on the desktop. An alias makes it easy to launch the program. All other program and data files will stay on the hard drive in the install location you selected.



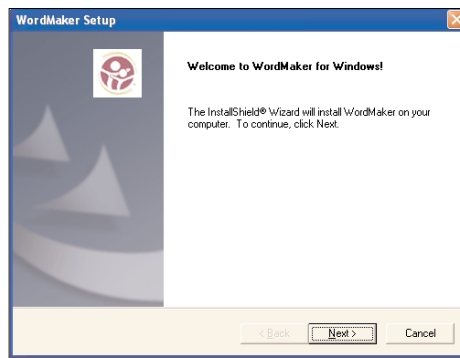
Windows

1. Insert the WordMaker CD in CD-ROM drive.
2. Double-click the My Computer icon.
3. Double-click the WordMaker CD icon.
4. Double-click the Setup.exe icon in the WordMaker Installer folder.



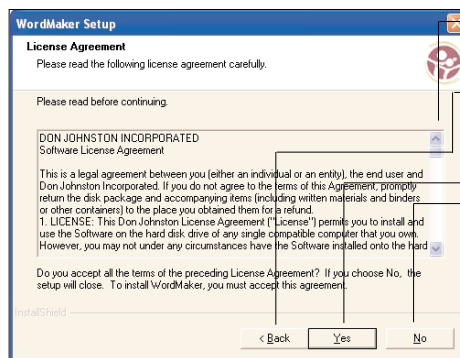
Setup.exe

The WordMaker Installer screen appears.



5. Click **Next** to go on with the installation.

The License Agreement screen appears. It is a standard Software License Agreement.



Scroll through the License Agreement

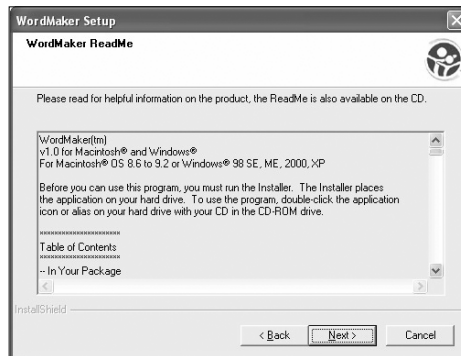
Go to the previous screen

Accept the terms of the License Agreement

Decline the terms of the License Agreement

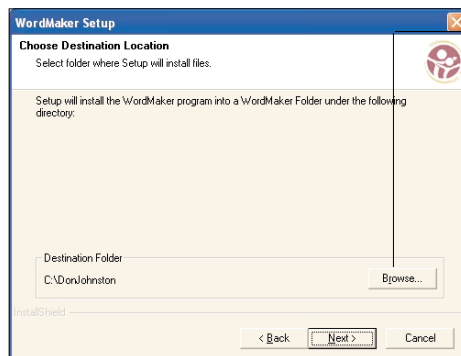
6. To continue with the installation, click **Yes**. Otherwise, click **No** to quit the Installer.

The Read Me screen is next. Read through the information in the Read Me for information on system requirements, known problems and version notes. Use the scroll bars to bring more of the text into view.



7. Click **Next** to continue with the installation.

The Choose Destination Location screen is next. This screen lets you select where to install WordMaker. The default hard drive is listed as the Destination Folder.

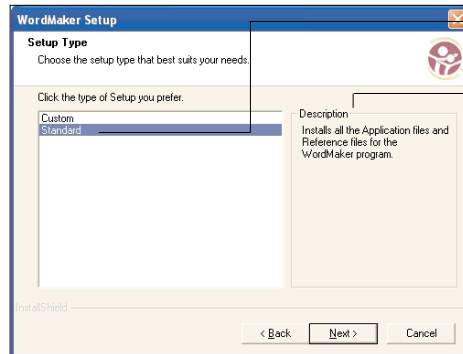


Click Browse to find and select an alternate install location

Note: WordMaker files will install on your startup drive unless you select a different destination volume. To install them on a different volume, click Browse in the Choose Destination Location dialog to select an alternate destination volume.

8. Click **Next** to install WordMaker in the location listed in the Destination Folder field.

The Setup Type screen is next.



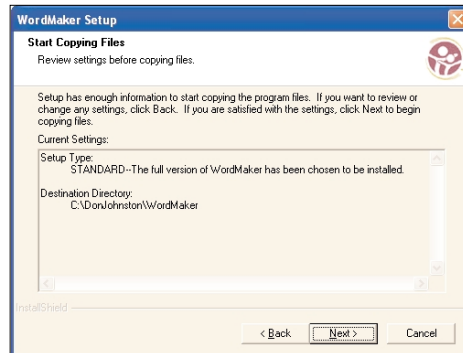
Click to select the desired type of installation

Shows a description of the current install option

Note: The Standard Install option is desired for most computers and situations.

9. Click **Next**.

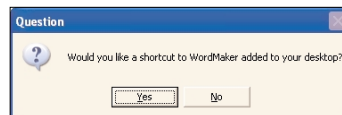
The Start Copying files screen is next. This screen confirms the setup type and destination directory selected.



10. If the settings are incorrect, use the Back buttons to change the settings. If the settings listed are correct, click **Next**.

11. Follow the prompts on the screen to complete the installation.

Note: You will be asked if you want to install a shortcut for WordMaker on the desktop. A shortcut makes it easy to launch the program. All other program and data files will stay on the hard drive in the install location you selected.



What is Installed

WordMaker tracks each student's progress in the program. This requires some file and data storage on the hard drive specified as the destination:

Don Johnston folder

WordMaker folder

- DATA folder
- WordMaker application
- WordMaker .ini
- Xtras folder
- WordMaker Documentation folder

A shortcut file (Windows) or alias file (Mac OS) is also added to the desktop if that option was selected during installation.

Other files are also installed during Standard (Windows) or Easy (Mac OS) Install:

- Acrobat Reader (if not already on the hard drive)
- If Co:Writer® 4000 and/or Co:Writer® Smart Applet is installed:
 - WM Tongue Twister.cwz
 - WM Total Word List.cwz
 - (in the corresponding Topic Dictionaries folder)
- If Draft:Builder® is installed:
 - WordMaker Word Categories.djd
 - (in DraftBuilder folder > Templates folder)
- If Write:OutLoud® v.3 is installed:
 - 100 word art JPEG files
 - (in WriteOutLoud® folder > Pictures folder > WordMaker Art folder>
- If BuildAbility® is installed:
 - 100 word art (BMP or PICT)
 - (in BuildAbility folder > Images folder)
 - WordMaker BA sentence example.FPT
 - (in BuildAbility > Sample files Folder)

After installation, the WordMaker application is launched from the hard drive but requires the CD present in the CD drive to run.

Note: Progress for each student is collected on the hard drive of the computer being used. For accurate data tracking, students must use WordMaker from the same computer each time they use the program.